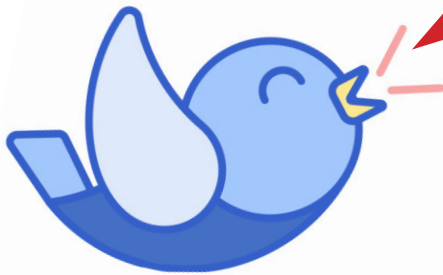


Early Bird SPECIAL



2025 • DATED GOODS

The Early Bird Gets the Deal!

ORDERS MUST BE RECEIVED BY MAY 31, 2024
PLEASE SPECIFY SHIP DATE

100%
 RECYCLED PRODUCTS
 POST-CONSUMER PAPER
 MADE IN THE USA

- Minimums as low as 100 pieces
- Additional discount as deep as 50/20
- Extended dating on 100 pieces or more
- Freight prepaid at all levels
- Order now and specify ship date
- Academic (AY) & Calendar Year (CY) products can be combined to qualify for the Early Bird Special*

**Please enter separate PO's for Academic and Calendar Year orders*

Special Notes:

- Discount levels are determined by the total quantity of calendars ordered **EXCLUDING** HOD124 and HOD4717

PROGRAM DETAILS					
Minimum Quantity	Discount	AY Invoice Due	CY Invoice Due	Freight	Qualify for Special Pricing
100	50/10	9/1/24	12/1/24	Prepaid	YES*
250	50/10/5	9/1/24	12/1/24	Prepaid	YES**
500	50/20	9/1/24	12/1/24	Prepaid	YES***
* Special pricing for HOD4717=\$2.58; for the HOD124=\$3.20					
** Special pricing for HOD4717=\$2.45; for the HOD124=\$3.06					
*** Special pricing for HOD4717=\$2.33; for the HOD124=\$2.95					
NOTE: Freight is prepaid to the contiguous United States					

- See reverse side for best selling items
- All dated items qualify for this program
- We prefer you order in package quantities.



Products that keep tomorrow in mind



2025 House of Doolittle - Dated Goods Order Form

Ranking	Item No.	Description	Size	List	Pkg. Qty.	50/10	50/10/5	50/20	Quantity
DESK PADS									
1	HOD150HD	DESK PAD, NON REFILLABLE 12 MOS.	22" x 17"	\$13.46	12	\$6.06	\$5.75	\$5.38	
2	HOD164	DESK PAD CALENDAR W/NOTES SECTION	22" x 17"	\$13.46	12	\$6.06	\$5.75	\$5.38	
3	HOD0124	ECONOMY COMPACT DESK CALENDAR	18.5" x 13"	\$11.03	12	\$4.96	\$4.72	\$4.41	
4	HOD12440	DESK PAD, BLUE HOLDER/BLUE PAPER	22" x 17"	\$18.44	6	\$8.30	\$7.88	\$7.38	
5	HOD1646	COMPACT DESK PAD CALENDAR	18.5" x 13"	\$11.69	6	\$5.26	\$5.00	\$4.68	
6	HOD140HD	DESK PAD, ILLUSTRATED, 12 MOS.	22" x 17"	\$17.73	12	\$7.98	\$7.58	\$7.09	
PLANNERS									
1	HOD26202	MONTHLY PLANNER, 14 MOS. - BLACK	8.5"X11"	\$19.47	10	\$8.76	\$8.32	\$7.79	
2	HOD27202	PROFESSIONAL WKLY APPT. BOOK - BLACK	8.5"X11"	\$25.37	6	\$11.42	\$10.85	\$10.15	
3	HOD28802	DAILY APPT. BOOK 12 MOS.	5" x 8"	\$22.66	6	\$10.20	\$9.69	\$9.06	
4	HOD27802	WEEKLY APPT. PLANNER - BLACK	5" x 8"	\$15.64	12	\$7.04	\$6.69	\$6.26	
5	HOD28302	WEEKLY/MONTHLY FULL SEVEN DAYS	8.5"X11"	\$28.70	5	\$12.92	\$12.27	\$11.48	
6	HOD262002	MONTHLY PLANNER, 24 MOS. - BLACK	8.5"X11"	\$23.65	6	\$10.64	\$10.11	\$9.46	
WALL CALENDARS									
1	HOD3640	THREE-MONTH WALL CALENDAR	12.25"x 26"	\$20.19	6	\$9.09	\$8.63	\$8.08	
2	HOD3638	EARTHSCAPES 3 MOS. WALL CALENDAR	12.25"x 26"	\$27.59	6	\$12.42	\$11.79	\$11.04	
3	HOD331HD	BAR HARBOR WALL CALENDAR	8.5" x 11"	\$12.31	12	\$5.54	\$5.26	\$4.92	
4	HOD332	BAR HARBOR WALL CALENDAR	12" x 17"	\$15.89	12	\$7.15	\$6.79	\$6.36	
5	HOD333	BAR HARBOR WALL CALENDAR	15.5" x 22"	\$22.66	6	\$10.20	\$9.69	\$9.06	
6	HOD3646	THREE-MONTH WALL CALENDAR - SMALL	8" X 17"	\$13.02	6	\$5.86	\$5.57	\$5.21	
LAMINATED WALL PLANNERS/CALENDARS									
1	HOD396	LAMINATED CALENDAR VERT/HORIZ	24"x37"	\$32.67	1	\$14.70	\$13.97	\$13.07	
2	HOD3961	CALENDAR YEAR LAMIN. VERT/HORIZ	32"x48"	\$42.83	1	\$19.27	\$18.31	\$17.13	
3	HOD3960	CALENDAR YEAR LAMIN. VERT/HORIZ	18"x24"	\$23.49	1	\$10.57	\$10.04	\$9.40	
4	HOD393	EARTHSCAPES ERASABLE WALL CALENDAR	24" x 37"	\$34.47	1	\$15.51	\$14.74	\$13.79	
5	HOD3962	CALENDAR YEAR LAMIN. VERT/HORIZ	33"x 66"	\$46.98	1	\$21.14	\$20.08	\$18.79	
SPECIAL PRICING									
	HOD124	ECONOMY DESK PAD	22"x17"	\$11.31	12	\$3.20	\$3.06	\$2.95	
	HOD4717	ECONOMY DESK CALENDAR REFILL	3.5" x 6"	\$7.26	12	\$2.58	\$2.45	\$2.33	
ADDITIONAL ITEMS									

TOTAL ORDER:	
PURCHASE ORDER #:	SHIP DATE:
DEALER NAME:	
SHIP TO ADDRESS:	
CITY:	STATE: ZIP CODE:
CONTACT/PHONE:	EMAIL: